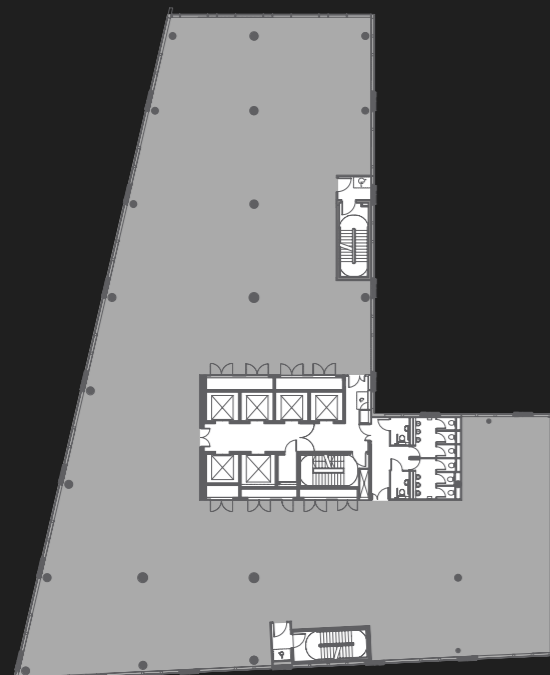
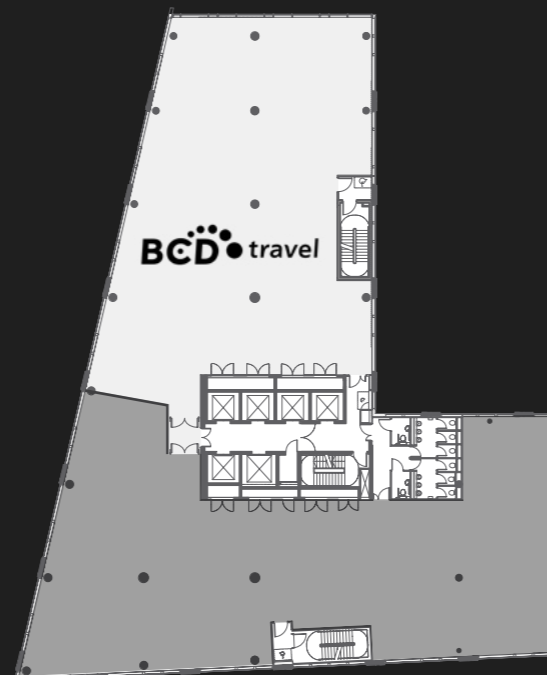


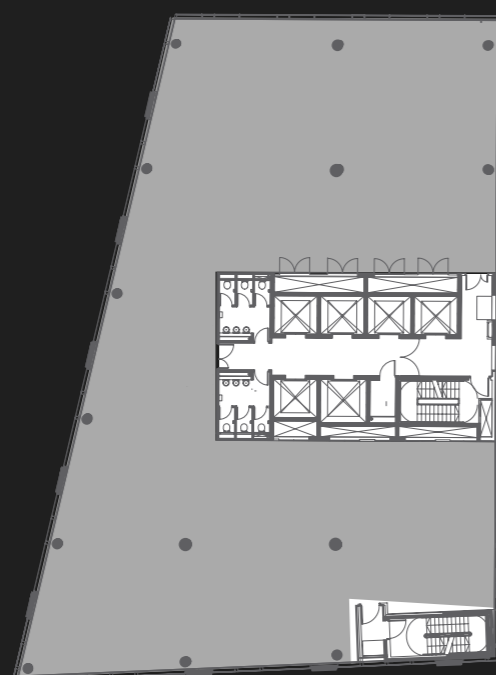
FLOOR PLATES



THIRD FLOOR
12,976 SQ FT



PART SIXTH FLOOR
7,294 SQ FT



TWELFTH FLOOR
7,917 SQ FT

Floor	Tenant / Availability	sq ft	sq m
Fifteenth	Ernst & Young		
Fourteenth	RSM		
Thirteenth	The Lead Agency		
Twelfth	TO LET	7,917	735.5
Eleventh	Barclays (Wealth & Corporate)		
Tenth	Liverpool Football Club		
Ninth	Liverpool Football Club		
Eighth	Liverpool Football Club		
Seventh (part)	Mason Owen Financial Services		
Seventh (part)	Mason Owen		
Sixth (part)	TO LET	7,294	677.6
Sixth (part)	BCD Travel		
Fifth	Police Mutual		
Fourth	Goldsmith Williams		
Third	TO LET	12,976	1,205.5
Second	Orega Business Centre		
First (part)	Orega Business Centre Reception		
First (part)	CS Financial		
Ground (part)	Nisbets		
Ground (part)	Bean Coffee		