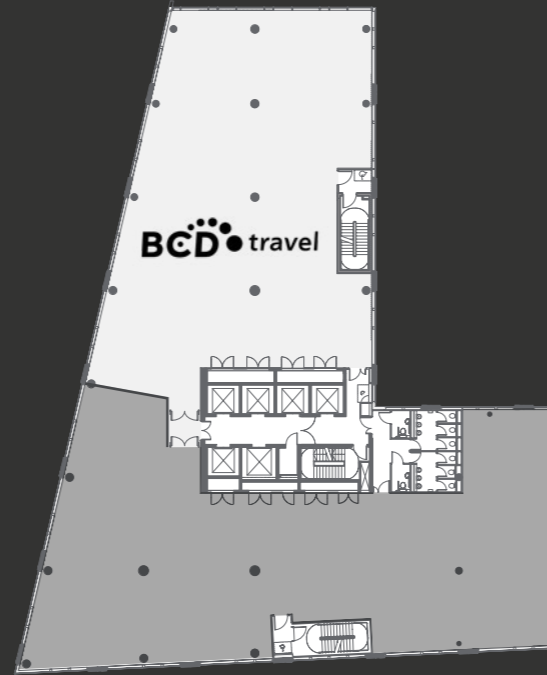
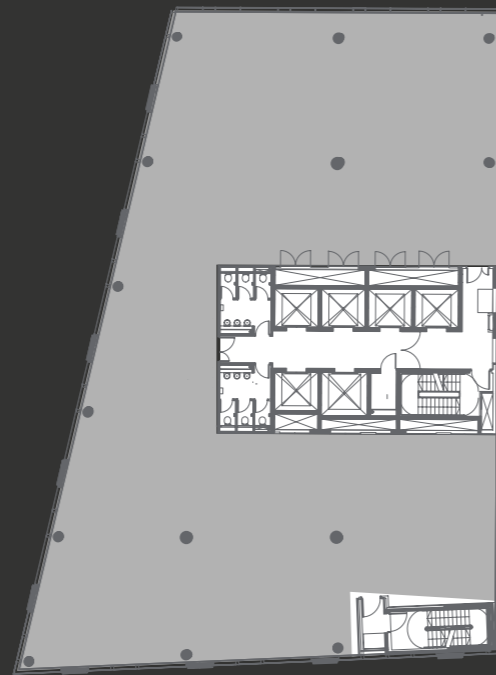


**THIRD FLOOR**  
12,976 SQ FT



**PART SIXTH FLOOR**  
7,294 SQ FT



**TWELFTH FLOOR**  
7,917 SQ FT

**FLOOR  
PLATES**

Floor	Tenant / Availability	sq ft	sq m
Fifteenth	Ernst & Young		
Fourteenth	RSM		
Thirteenth	The Lead Agency		
<b>Twelfth</b>	<b>TO LET</b>	<b>7,917</b>	<b>735.5</b>
Eleventh	Barclays (Wealth & Corporate)		
Tenth	Liverpool Football Club		
Ninth	Liverpool Football Club		
Eighth	Liverpool Football Club		
Seventh	Fujitsu		
Seventh (part)	Idox plc		
<b>Sixth (part)</b>	<b>TO LET</b>	<b>7,294</b>	<b>677.6</b>
Sixth (part)	BCD Travel		
Fifth	Police Mutual		
Fourth	Goldsmith Williams		
<b>Third</b>	<b>TO LET</b>	<b>12,976</b>	<b>1,205.5</b>
Second	Orega		
First (part)	Orega - Reception		
First (part)	CS Financial		
Ground	Nisbets		